

Entría 4-Door Controller Installation Guide



Created April 2025





Contents

Items Included.....	3
Connection Wiring.....	4
Internet.....	4
Cellular	5
Expansion Board Jumpers.....	6
Dry Contact Relay.....	7
Wet Contact Relay.....	7
Relay Operation Configuration.....	8
Supported Devices.....	9
Camera Wiring.....	9





Items Included

- Entría Unit
- 12 Volt / 5 amp Power Supply
- Customer Information Packet



Wiring Guidelines

Gauge Wire	Wire Run
18	25 feet
16	50 feet
12	60 feet

We do not recommend running wires over 60 feet.

Required wiring:

6 conductor stranded and shielded for main device, and 4 conductor stranded and shielded for optional Wiegand devices.

Pay attention to polarity.

The system uses DC power.

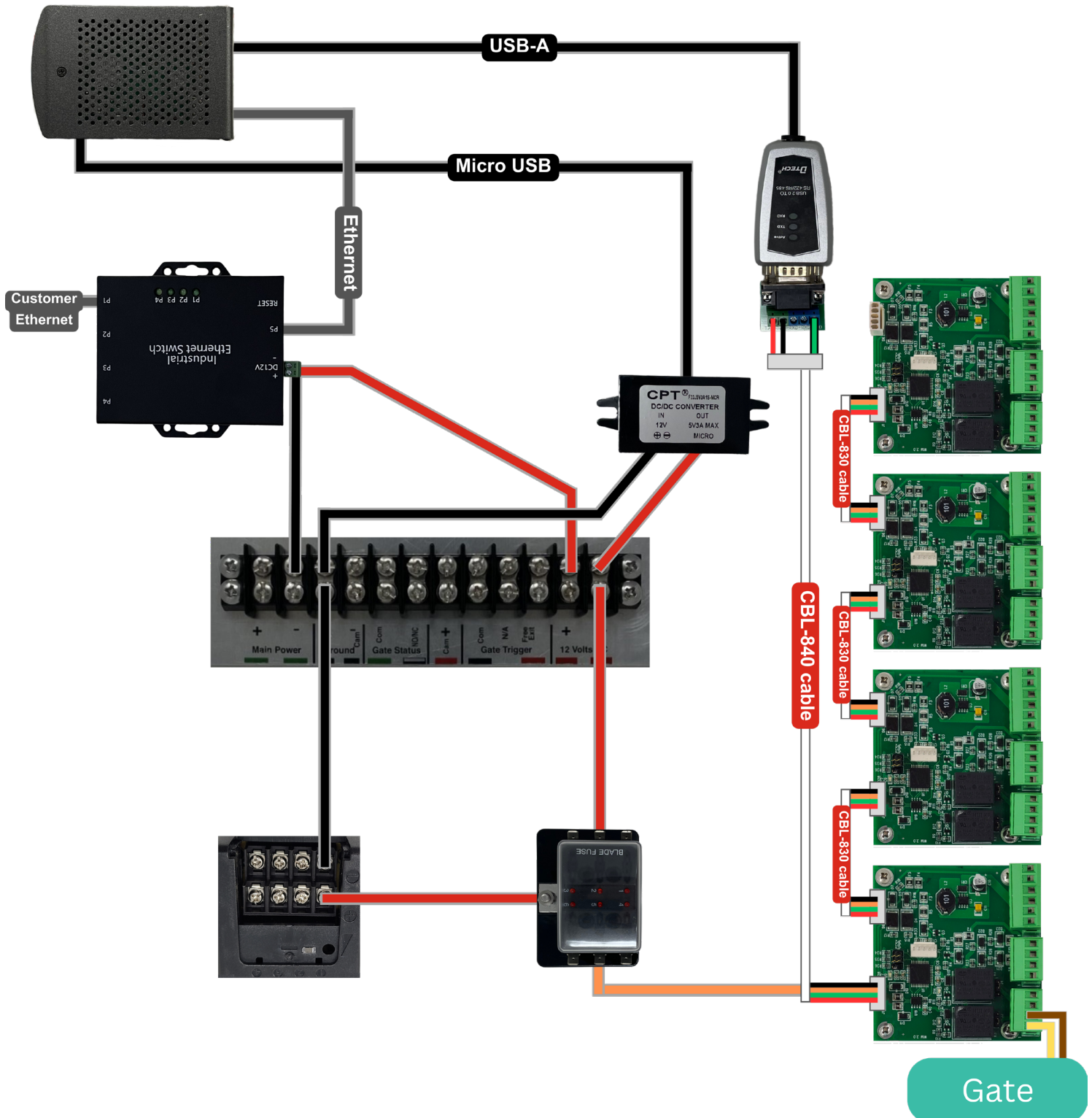


Operating Temperatures

-20° to 70° C
-4° to 158° F

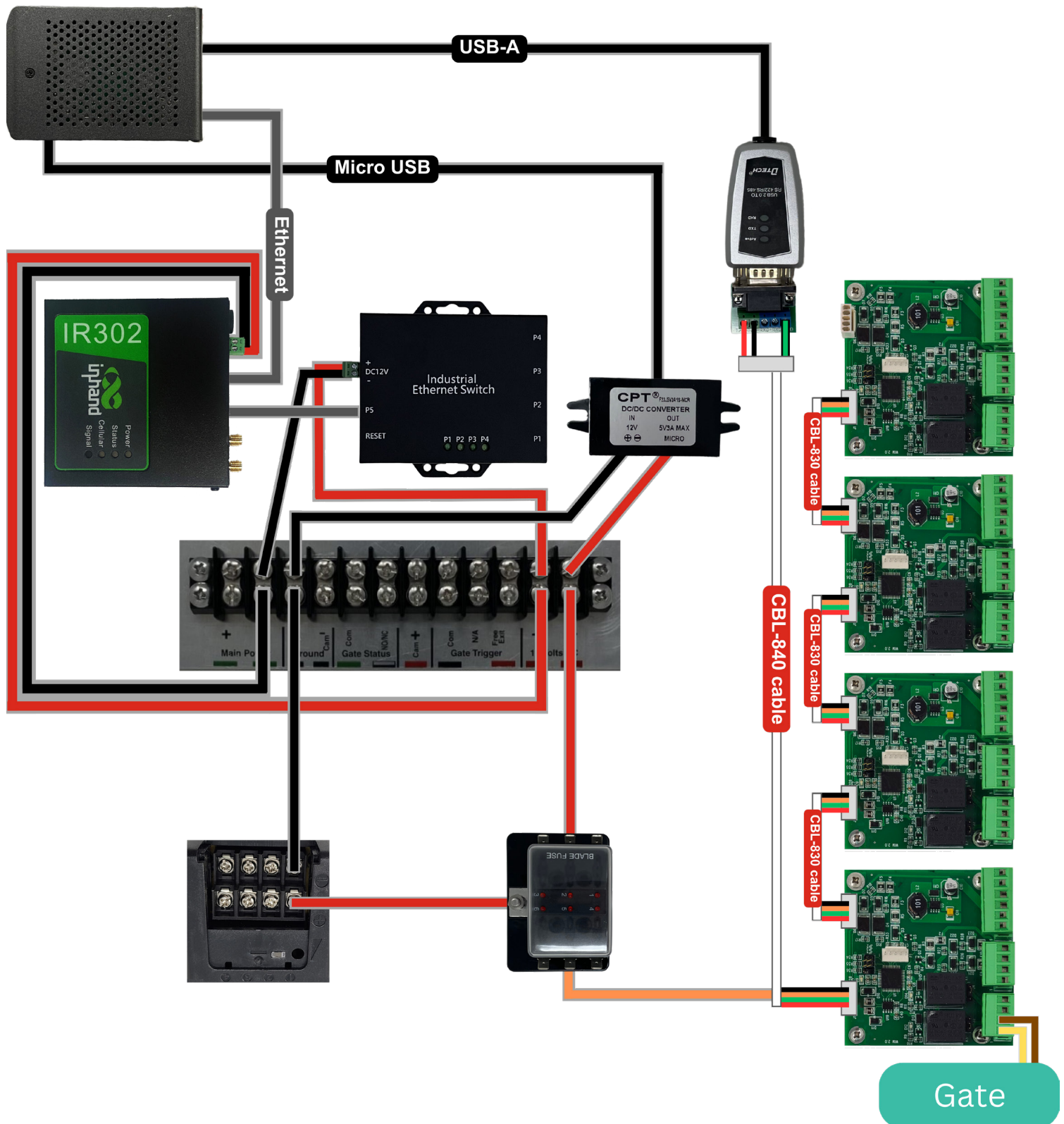


Connection Wiring: VPN





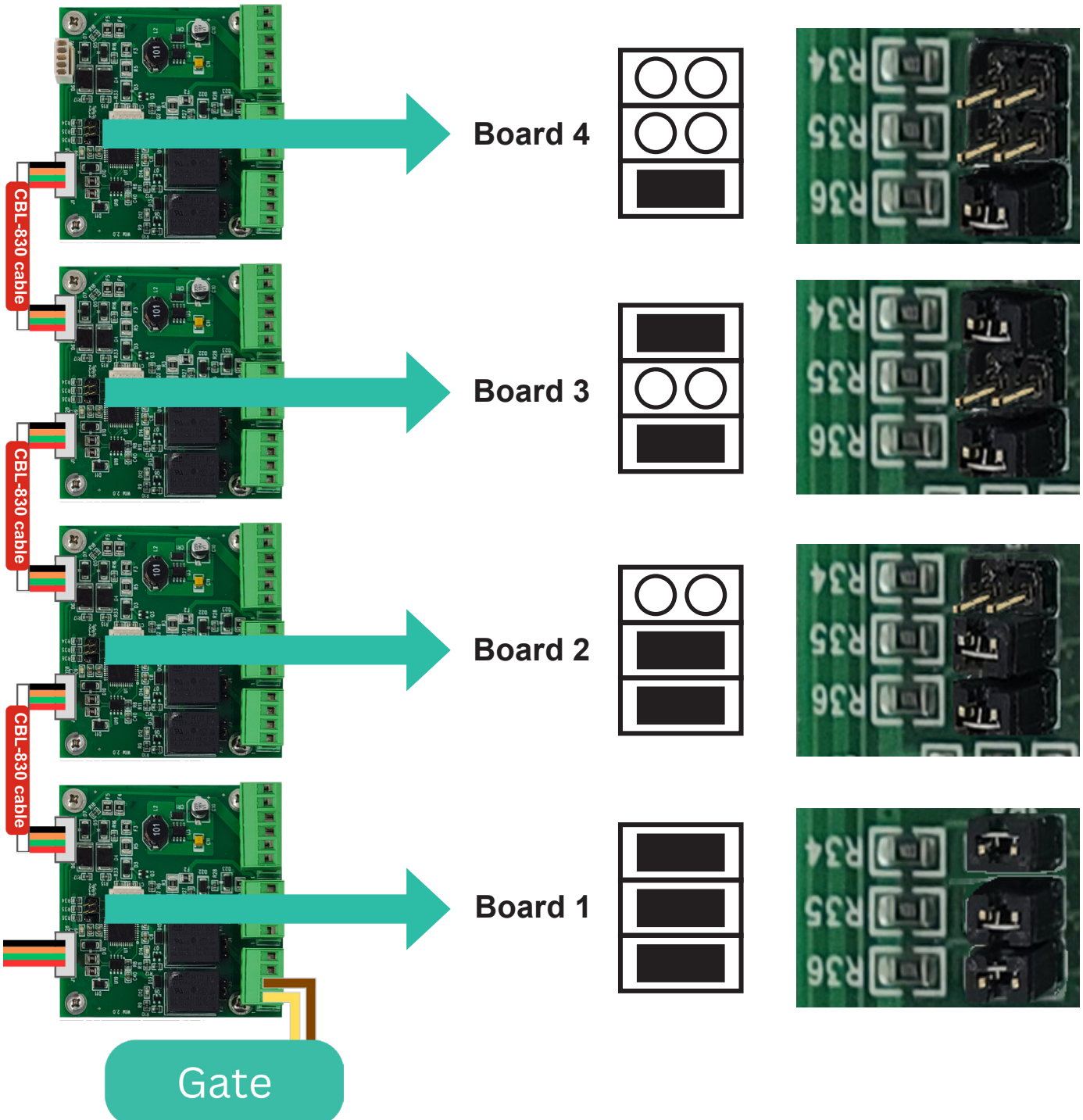
Connection Wiring: Cellular





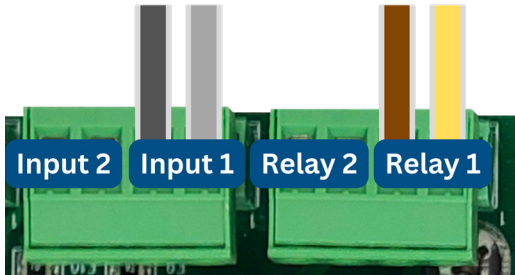
Expansion Board Jumpers

Jumpers allow you to identify the expansion boards. The number and configuration of jumpers on each expansion board identifies the expansion board.

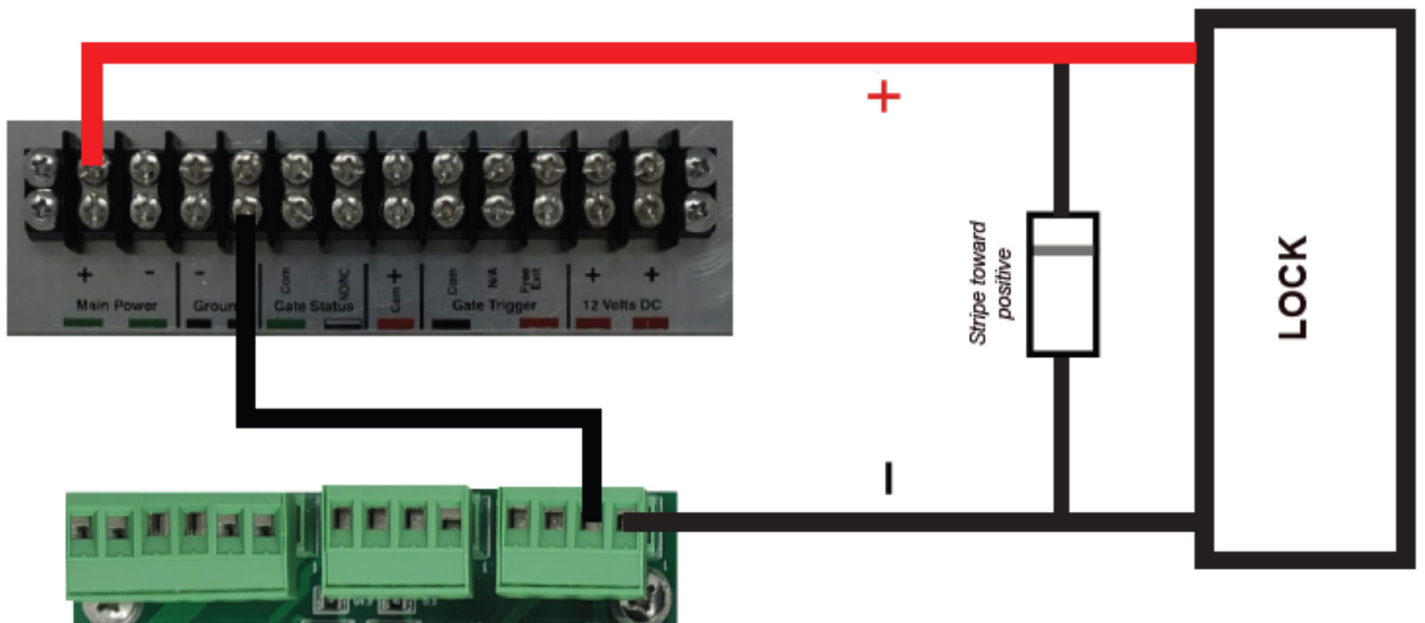




Dry Contact Relay



Wet Contact Relay





Relay Operation Configuration (Normally Open / Closed Settings)

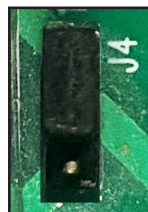
Jumper configurations for Normally Open and Normally Closed are shown below. The jumpers can be found next to the relays on the expansion boards.

By default, relays are Normally Open.

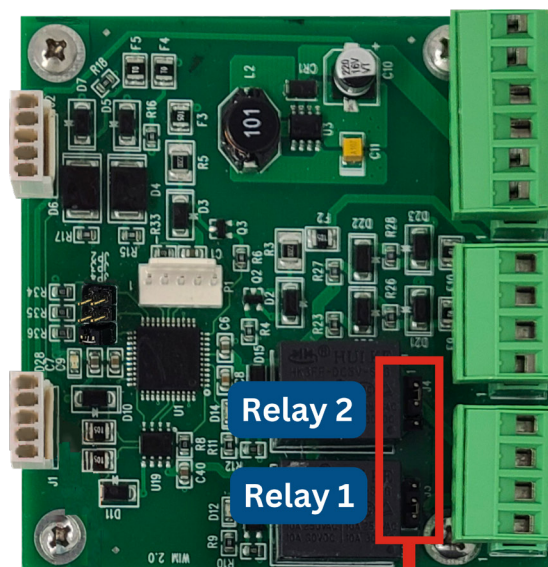
Normally Open



Normally Closed



Relay 1 and Relay 2 can be set independently. Their configurations are not dependent upon each other. When wiring the expansion board, ensure that the wiring matches the state of the relay.



Normally Closed

or



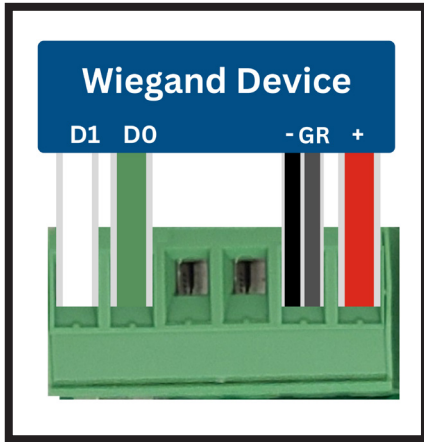
Normally Open

For a 12V Magnetic Lock, set the jumpers as shown above, whether Normally Open or Closed.



Entría Supported Devices

Any 26-bit Wiegand device (up to 4)



CellGate Wiegand Device

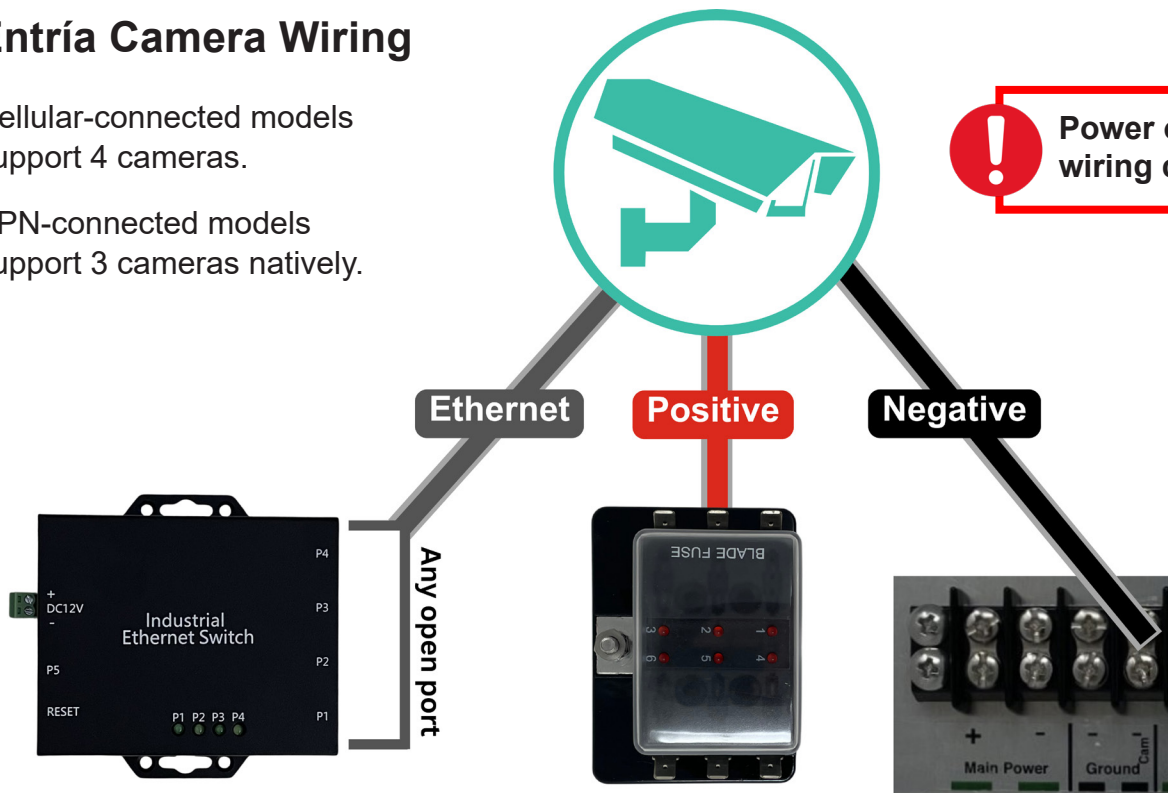


Generic Wiegand Device

Entría Camera Wiring

Cellular-connected models support 4 cameras.

VPN-connected models support 3 cameras natively.



! Power off Entría before wiring cameras.

If 3-4 cameras are connected, then Entría might become overloaded with power. If so, power one or more of the cameras with a separate 12V transformer.